

Tree Point	Diameter IN	Type
1	12	OAK
2	12	GUM
3	24	OAK
4	15	OAK
5	12	GUM
6	15	GUM
7	12	ASH
8	12	TWIN-ASH
9	12	ASH
10	15	WALNUT
11	12	WALNUT
12	12	WALNUT
13	36	OAK
14	12	OAK
15	12	OAK
16	12	GUM TRIPLE
17	12	GUM
18	15	OAK
19	24	OAK
20	12	OAK
21	12	OAK
22	18	OAK
23	12	HICKORY
24	12	OAK
25	18	GUM
26	12	HICKORY
27	12	OAK
28	12	OAK
29	12	TWIN-ASH
30	12	ASH
31	12	ASH
32	18	ASH
33	12	ASH
34	18	POP
35	12	ASH
36	24	OAK
37	18	ASH
38	30	MAPLE
39	24	GUM
40	12	ASH
41	18	TWIN-MAPLE
42	12	MAPLE
43	12	HICKORY
44	12	HICKORY
45	12	ASH
46	12	MAPLE
47	12	ASH
48	12	POP

Tree Point	Diameter IN	Type
49	12	ASH
50	12	MAPLE
51	12	ASH
52	12	ASH
53	15	WALNUT
54	12	ASH
55	18	TRPL-ASH
56	12	BASSWOOD
57	15	BASSWOOD
58	18	WALNUT
59	15	GUM
60	15	GUM
61	18	GUM
62	12	ASH
63	18	ASH
64	15	GUM
65	15	ASH
66	12	ASH
67	12	ASH
68	15	ASH
69	12	GUM
70	24	ASH
71	15	ASH
72	20	POP
73	12	GUM
74	12	TRPL-GUM
75	12	GUM
76	20	GUM
77	12	ASH
78	12	GUM
79	12	GUM
80	12	ASH
81	24	GUM
82	15	GUM
83	12	CEDAR
84	12	GUM
85	12	GUM
86	24	GUM
87	15	GUM
88	12	ASH
89	24	ASH
90	12	GUM
91	18	ASH
92	12	ASH
93	12	ASH
94	12	ASH
95	15	ASH
96	24	POP

Tree Point	Diameter IN	Type
97	20	GUM
98	18	GUM
99	18	POP
100	18	POP
101	15	POP
102	18	POP
103	15	POP
104	12	POP
105	15	ASH
106	15	ASH
107	12	ASH
108	18	POP
109	15	GUM
110	12	GUM
111	15	TWIN-GUM
112	15	GUM
113	18	ASH
114	20	ASH
115	12	GUM
116	12	ASH
117	12	GUM
118	12	ASH
119	15	GUM
120	15	PINE
121	12	GUM
122	18	PINE
123	12	PINE
124	15	ASH
125	12	MAPLE
126	12	GUM
127	15	PINE
128	15	PINE
129	12	GUM
130	24	OAK
131	12	CEDAR
132	12	ASH
133	12	POP
134	12	BASSWOOD
135	12	ASH
136	12	GUM
137	12	GUM
138	12	TWIN-POP
139	15	MAPLE
140	12	GUM
141	15	GUM
142	15	GUM
143	15	GUM
144	15	POP

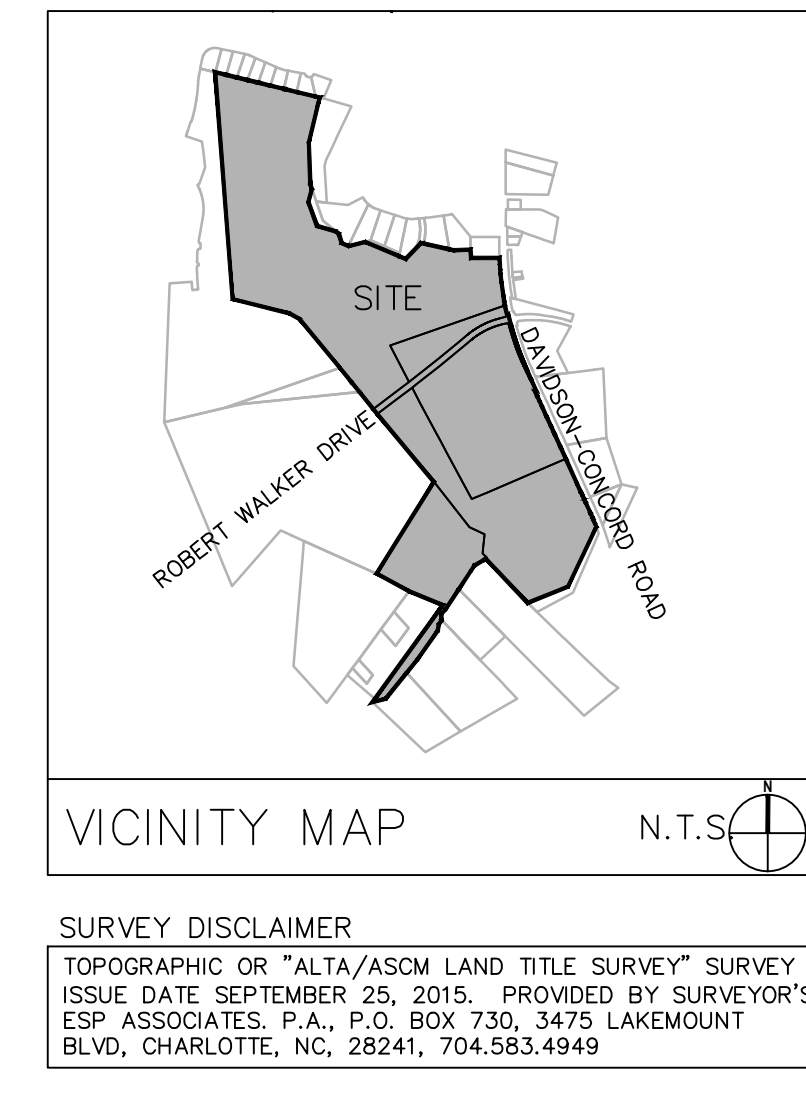
Tree Point	Diameter IN	Type
145	12	POP
146	12	POP
147	12	POP
148	12	POP
149	12	POP
150	18	POP
151	15	POP
152	12	MAPLE
153	12	ASH
154	12	GUM
155	12	GUM
156	12	ASH
157	15	POP
158	15	BIRCH
159	18	POP
160	18	MAPLE
161	12	ASH
162	12	ASH
163	12	TWIN-MAPLE
164	12	GUM
165	15	ASH
166	15	POP
167	15	GUM
168	12	GUM
169	15	ASH
170	12	GUM
171	12	ASH
172	12	GUM
173	12	GUM
174	12	GUM
175	18	ASH
176	12	WALNUT
177	24	ASH
178	12	ASH
179	12	ASH
180	15	ASH
181	12	POP
182	12	ASH
183	12	GUM
184	12	GUM
185	12	GUM
186	12	TWIN-POP
187	12	GUM
188	15	GUM
189	15	TWIN-OAK
190	18	POP
191	18	GUM
192	15	GUM

Tree Point	Diameter IN	Type
193	12	MAPLE
194	12	MAPLE
195	12	MAPLE
196	12	MAPLE
197	15	OAK
198	12	GUM
199	12	ASH
200	15	ASH
201	12	OAK
202	12	OAK
203	12	OAK
204	15	MAPLE
205	15	GUM
206	15	ASH
207	15	ASH
208	12	ASH
209	12	OAK
210	15	MAPLE
211	12	GUM
212	24	MAPLE
213	18	OAK
214	12	OAK
215	12	GUM
216	15	OAK
217	18	OAK
218	12	GUM
219	18	OAK
220	18	MAPLE
221	12	GUM
222	12	POP
223	12	MAPLE
224	12	OAK
225	24	POP
226	18	GUM
227	15	GUM
228	12	OAK
229	12	POP
230	48	BIRCH
231	12	MAPLE
232	18	MAPLE
233	18	MAPLE
234	12	GUM
235	12	GUM
236	12	OAK
237	12	OAK
238	12	OAK
239	15	OAK
240	15	OAK

Tree Point	Diameter IN	Type
241	18	MAPLE
242	12	OAK
243	12	OAK
244	12	MAPLE
245	15	OAK
246	12	OAK
247	12	ASH
248	12	GUM
249	15	GUM
250	12	GUM
251	12	OAK
252	12	OAK
253	18	MAPLE
254	12	MAPLE
255	15	MAPLE
256	12	MAPLE
257	12	ASH
258	15	OAK
259	12	BIRCH
260	12	OAK
261	15	OAK
262	12	TWIN-OAK
263	12	OAK
264	15	OAK
265	12	POP
266	12	OAK
267	12	GUM
268	12	POP
269	21	OAK
270	15	OAK
271	15	GUM
272	15	OAK
273	12	OAK
274	12	BEECH
275	12	POP
276	12	TWIN-MAPLE
277	12	MAPLE
278	12	OAK
279	12	BIRCH
280	15	OAK
281	12	TWIN-POP
282	12	POP
283	12	OAK
284	12	OAK
285	12	OAK
286	12	OAK
287	12	OAK
288	15	OAK

Tree Point	Diameter IN	Type
289	15	OAK
290	15	OAK
291	12	OAK
292	12	GUM
293	12	POP
294	12	GUM
295	15	OAK
296	12	POP
297	12	OAK
298	18	MAPLE
299	15	MAPLE
300	24	GUM
301	12	MAPLE
302	18	POP
303	12	GUM
304	15	POP
305	15	GUM
306	12	MAPLE
307	18	POP
308	18	MAPLE
309	15	OAK
310	15	MAPLE
311	12	MAPLE
312	12	MAPLE
313	15	OAK
314	12	MAPLE
315	12	GUM
316	12	MAPLE
317	18	POP
318	12	OAK
319	15	MAPLE
320	12	OAK
321	12	MAPLE
322	15	OAK
323	12	MAPLE
324	12	MAPLE
325	24	POP
326	12	MAPLE
327	24	MAPLE
328	18	MAPLE
329	18	OAK
330	18	POP
331	12	POP
332	12	POP
333	12	OAK
334	12	BIRCH
335	12	OAK
336	18	MAPLE

Tree Point	Diameter IN	Type
337	18	MAPLE
338	12	POP
339	12	POP
340	12	OAK
341	12	MAPLE
342	12	MAPLE
343	12	OAK
344	12	MAPLE
345	12	GUM
346	12	GUM
347	12	GUM
348	12	OAK
349	12	OAK
350	12	OAK
351	12	POP
352	12	POP
353	12	OAK
354	12	OAK
355	15	OAK
356	12	OAK
357	12	MAPLE
358	12	OAK
359	15	OAK
360	15	OAK
361	18	OAK
362	12	OAK
363	12	OAK
364	12	OAK
365	12	OAK
366	15	OAK
367	12	MAPLE
368	12	OAK
369	12	OAK
370	12	OAK
371	12	OAK
372	12	OAK
373	12	OAK
374	12	GUM
375	12	TWIN-GUM
376	15	OAK
377	12	OAK
378	15	OAK
379	12	OAK
380	12	GUM
381	12	TWIN-OAK
382	18	GUM
383	18	MAPLE
384	24	POP



Shaping the Environment
Realizing the Possibilities

Land Planning
+
Landscape Architecture
Civil Engineering
+
Urban Design

200 South Tryon Street, Suite 1400
Charlotte, North Carolina 28202
p+ 704 376 1555 f+ 704 376 7851
url+ www.colejeneststone.com

Lennar Carolinas, LLC

11230 CARMEL COMMONS BLVD
CHARLOTTE, NC 28226

WestBranch (Residential)

ROBERT WALKER DRIVE
DAVIDSON, NC 28036

ENVIRONMENTAL INVENTORY

Project No.
4418

Issued
12/30/15

Revised



Tree Point	Diameter IN	Type
385	12	QUAD-GUM
386	18	ASH
387	12	OAK
388	15	OAK
389	24	POP
390	18	POP
391	18	POP
392	12	OAK
393	12	MAPLE
394	12	MAPLE
395	12	OAK
396	12	OAK
397	12	POP
398	12	MAPLE
399	12	OAK
400	15	OAK
401	12	OAK
402	24	OAK
403	15	OAK
404	12	OAK
405	12	OAK
406	15	OAK
407	18	OAK
408	24	OAK
409	12	OAK
410	12	OAK
411	12	OAK
412	12	OAK
413	12	