

FIRST FLOOR SQUARE FOOTAGE: 52,662 SQ. FT.
 SECOND FLOOR SQUARE FOOTAGE: 52,662 SQ. FT.
 THIRD FLOOR SQUARE FOOTAGE: 55,194 SQ. FT.
 FOURTH FLOOR SQUARE FOOTAGE: 31,322 SQ. FT.
 TOTAL SQUARE FOOTAGE: 191,840 SQ. FT.

FIRST FLOOR PLAN

SCALE: 1' = 40'



DAVIDSON DEPOT
 DAVIDSON, NORTH CAROLINA
 NOVEMBER 11, 2014

THE ILLUSTRATIVE ELEVATIONS ARE PROVIDED TO REFLECT THE ARCHITECTURAL STYLE AND QUALITY OF THE BUILDING THAT MAY BE CONSTRUCTED AND THE ACTUAL BUILDING ON THE SITE MAY VARY FROM THE ARCHITECTURAL CONCEPT ILLUSTRATIONS AS LONG AS THE GENERAL ARCHITECTURAL CONCEPTS AND INTENT ILLUSTRATED ARE MAINTAINED. THE DEVELOPMENT DEPICTED IN THE SITE AND BUILDING PLANS IS SCHEMATIC IN NATURE, INTENDED TO DESCRIBE THE GENERAL LAYOUT AND ARRANGEMENT OF THE BUILDING AND MAY BE ALTERED OR MODIFIED DURING DESIGN DEVELOPMENT AND CONSTRUCTION PHASES SUBJECT TO THE STANDARDS OF THE DAVIDSON PLANNING ORDINANCE IN EFFECT ON NOVEMBER 11, 2014. THE DESIGN OF CERTAIN FEATURES MAY VARY DEPENDING ON FINAL DRAWINGS AND ON ENVIRONMENTAL AND REGULATORY MATTERS.





SECOND FLOOR PLAN

FIRST FLOOR SQUARE FOOTAGE: 52,662 SQ. FT.
 SECOND FLOOR SQUARE FOOTAGE: 52,662 SQ. FT.
 THIRD FLOOR SQUARE FOOTAGE: 55,194 SQ. FT.
 FOURTH FLOOR SQUARE FOOTAGE: 31,322 SQ. FT.
 TOTAL SQUARE FOOTAGE: 191,840 SQ. FT.

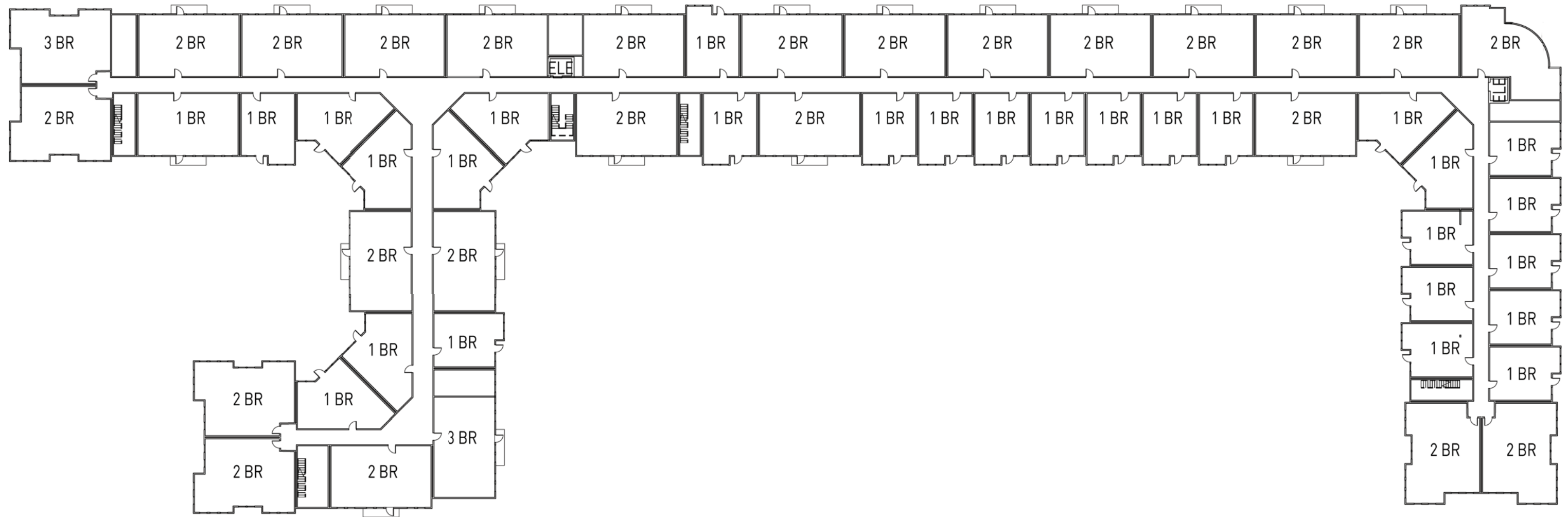
SCALE: 1' = 40'



DAVIDSON DEPOT
 DAVIDSON, NORTH CAROLINA
 NOVEMBER 11, 2014

THE ILLUSTRATIVE ELEVATIONS ARE PROVIDED TO REFLECT THE ARCHITECTURAL STYLE AND QUALITY OF THE BUILDING THAT MAY BE CONSTRUCTED AND THE ACTUAL BUILDING ON THE SITE MAY VARY FROM THE ARCHITECTURAL CONCEPT ILLUSTRATIONS AS LONG AS THE GENERAL ARCHITECTURAL CONCEPTS AND INTENT ILLUSTRATED ARE MAINTAINED. THE DEVELOPMENT DEPICTED IN THE SITE AND BUILDING PLANS IS SCHEMATIC IN NATURE, INTENDED TO DESCRIBE THE GENERAL LAYOUT AND ARRANGEMENT OF THE BUILDING AND MAY BE ALTERED OR MODIFIED DURING DESIGN DEVELOPMENT AND CONSTRUCTION PHASES SUBJECT TO THE STANDARDS OF THE DAVIDSON PLANNING ORDINANCE IN EFFECT ON NOVEMBER 11, 2014. THE DESIGN OF CERTAIN FEATURES MAY VARY DEPENDING ON FINAL DRAWINGS AND ON ENVIRONMENTAL AND REGULATORY MATTERS.





FIRST FLOOR SQUARE FOOTAGE: 52,662 SQ. FT.
 SECOND FLOOR SQUARE FOOTAGE: 52,662 SQ. FT.
 THIRD FLOOR SQUARE FOOTAGE: 55,194 SQ. FT.
 FOURTH FLOOR SQUARE FOOTAGE: 31,322 SQ. FT.
 TOTAL SQUARE FOOTAGE: 191,840 SQ. FT.

THIRD FLOOR PLAN

SCALE: 1' = 40'



DAVIDSON DEPOT
 DAVIDSON, NORTH CAROLINA
 NOVEMBER 11, 2014

THE ILLUSTRATIVE ELEVATIONS ARE PROVIDED TO REFLECT THE ARCHITECTURAL STYLE AND QUALITY OF THE BUILDING THAT MAY BE CONSTRUCTED AND THE ACTUAL BUILDING ON THE SITE MAY VARY FROM THE ARCHITECTURAL CONCEPT ILLUSTRATIONS AS LONG AS THE GENERAL ARCHITECTURAL CONCEPTS AND INTENT ILLUSTRATED ARE MAINTAINED. THE DEVELOPMENT DEPICTED IN THE SITE AND BUILDING PLANS IS SCHEMATIC IN NATURE, INTENDED TO DESCRIBE THE GENERAL LAYOUT AND ARRANGEMENT OF THE BUILDING AND MAY BE ALTERED OR MODIFIED DURING DESIGN DEVELOPMENT AND CONSTRUCTION PHASES SUBJECT TO THE STANDARDS OF THE DAVIDSON PLANNING ORDINANCE IN EFFECT ON NOVEMBER 11, 2014. THE DESIGN OF CERTAIN FEATURES MAY VARY DEPENDING ON FINAL DRAWINGS AND ON ENVIRONMENTAL AND REGULATORY MATTERS.





FIRST FLOOR SQUARE FOOTAGE: 52,662 SQ. FT.
 SECOND FLOOR SQUARE FOOTAGE: 52,662 SQ. FT.
 THIRD FLOOR SQUARE FOOTAGE: 55,194 SQ. FT.
 FOURTH FLOOR SQUARE FOOTAGE: 31,322 SQ. FT.
 TOTAL SQUARE FOOTAGE: 191,840 SQ. FT.

FOURTH FLOOR PLAN

SCALE: 1' = 40'



DAVIDSON DEPOT
 DAVIDSON, NORTH CAROLINA
 NOVEMBER 11, 2014

THE ILLUSTRATIVE ELEVATIONS ARE PROVIDED TO REFLECT THE ARCHITECTURAL STYLE AND QUALITY OF THE BUILDING THAT MAY BE CONSTRUCTED AND THE ACTUAL BUILDING ON THE SITE MAY VARY FROM THE ARCHITECTURAL CONCEPT ILLUSTRATIONS AS LONG AS THE GENERAL ARCHITECTURAL CONCEPTS AND INTENT ILLUSTRATED ARE MAINTAINED. THE DEVELOPMENT DEPICTED IN THE SITE AND BUILDING PLANS IS SCHEMATIC IN NATURE, INTENDED TO DESCRIBE THE GENERAL LAYOUT AND ARRANGEMENT OF THE BUILDING AND MAY BE ALTERED OR MODIFIED DURING DESIGN DEVELOPMENT AND CONSTRUCTION PHASES SUBJECT TO THE STANDARDS OF THE DAVIDSON PLANNING ORDINANCE IN EFFECT ON NOVEMBER 11, 2014. THE DESIGN OF CERTAIN FEATURES MAY VARY DEPENDING ON FINAL DRAWINGS AND ON ENVIRONMENTAL AND REGULATORY MATTERS.

